

SYMPHONIC
JAZZ
ORCHESTRA

MITCH GLICKMAN MUSIC DIRECTOR

Carpenter Performing Arts Center presents
an Arts for Life Community Connections concert

SYMPHONIC JAZZ ORCHESTRA'S

**“RHAPSODY IN BLUE”
CENTENNIAL CONCERT**
with Special Guest, Marcus Roberts

Saturday, May 11 at 8 PM
Pre-Concert Talk at 7 PM



Richard & Karen
Carpenter
performing arts center

Pre-Concert Talk Mitch Glickman & Marcus Roberts

“La Création du Monde” (1923) Darius Milhaud

“A Rhapsody in Blue” (1924) George Gershwin
Marcus Roberts, piano Arr. Marcus Roberts
Martin Jaffe, bass
Jason Marsalis, drums

A RHAPSODY IN BLUE.



PASADENA
SHOWCASE
HOUSE
for the Arts



MARCUS ROBERTS

Marcus Roberts is a highly acclaimed modern jazz pianist, composer, and educator. He is known for his ability to blend the jazz and classical idioms into something wholly new and for his unique approach to jazz trio performance, which relies on all musicians sharing equally in shaping the direction of the music by using a system of musical cues and flexible forms to change its tempo, mood, texture, or form. Roberts's life and work were featured by CBS's 60 Minutes in a 2014 episode, "The Virtuoso," which traced his life from his early years in Jacksonville, Florida, and at the Florida School for the Deaf and Blind, to his award-winning career as a performer and composer. Roberts launched his own record label, J-Master Records in 2009, and is the founder of the Modern Jazz Generation, a multigenerational ensemble that is the realization of his long-standing dedication to training and mentoring younger jazz musicians. Among other accomplishments, Roberts has played with Wynton Marsalis and Jazz at Lincoln Center, appeared on Saturday Night Live, and was artist in residence for the 2002 Winter Olympics in Salt Lake City.

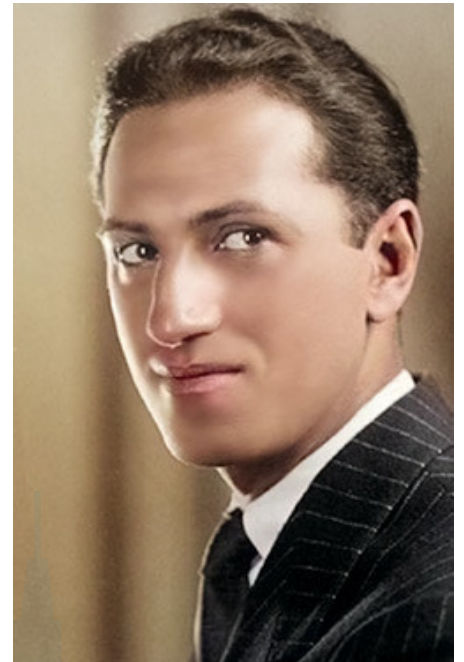
Lynn L. Moore, Manager, J-Master Music

Contact: llmoore347@gmail.com

www.marcusroberts.com

**GEORGE GERSHWIN (1898 - 1937)**

George Gershwin was an American composer and pianist whose compositions spanned popular, jazz and classical genres. Among his best-known works are Rhapsody in Blue (1924), Concerto in F (1925), An American in Paris (1928), and the opera, Porgy & Bess (1935) along with jazz standards "Fascinating Rhythm," "Embraceable You," "Summertime" and "I Got Rhythm." On Feb. 12, 1924, bandleader Paul Whiteman presented a concert entitled "Experiments in Modern Music" at New York City's Aeolian Hall. The concert featured leading composers of the day and included the premiere of Gershwin's Rhapsody in Blue featuring the composer as piano soloist. Whiteman's arranger Ferde Grofe orchestrated the work, which would go on to usher in the Jazz Age. Gershwin's Rhapsody successfully fused jazz and classical elements and established his reputation as an eminent composer and became one of the most popular of all concert works.

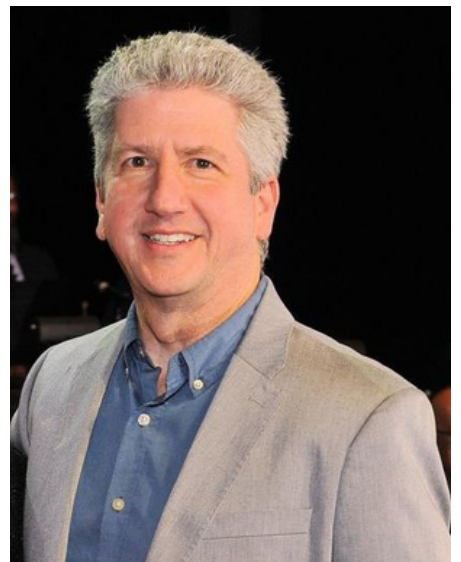


DARIUS MILHAUD (1892 - 1974)

French composer, conductor and teacher Darius Milhaud was a member of Les Six - also known as The Group of Six - and one of the most prolific composers of the 20th century. His compositions are influenced by jazz and Brazilian music and he is considered one of the key modernist composers. During WWII, Milhaud left France and emigrated to the U.S., where he began teaching at Mills College in Oakland. Jazz pianist Dave Brubeck would become one of Milhaud's most famous students, along with Burt Bacharach, Philip Glass, Steve Reich and Karlheinz Stockhausen. *La Création du Monde* (Creation of the World) was composed in 1923 for the Ballet Suédois in Paris, to a scenario by novelist Blaise Cendrars, based on African folk mythology. The French cubist painter Fernand Léger designed the sets. The suite is in 6 continuous movements.

**MITCH GLICKMAN**

Award-winning composer, conductor, and producer, Mitch Glickman's diverse music career covers the fields of concert, jazz, opera, film, and recordings. He founded the Symphonic Jazz Orchestra in 2001 and his concert works have been commissioned and premiered by leading ensembles including the American Jazz Philharmonic, Oberlin Orchestra, Turtle Island String Quartet, and Angel City Chorale. His film and television credits include scores for the independent films "Street of Pain" starring Steve Carell, and "Proudheart" starring Lorrie Morgan, along with *Night Court*, *Cheers*, and the Grammy Award Show. Glickman also serves as Director of Music Programs for LACMA (Los Angeles County Museum of Art) and he hosts and produces the weekly "Beyond Symphonic Jazz" radio series on KJazz 88.1 FM. In 2021, Glickman was named Jazz Educator of the Year by the Los Angeles Jazz Society.



ABOUT THE SYMPHONIC JAZZ ORCHESTRA

Founded in 2002, the Symphonic Jazz Orchestra is a non-profit organization dedicated to perpetuating the uniquely American genre of symphonic jazz through its commissioning program, and inspiring the next generation through its "Music in the Schools" program. We bring much-needed TK through 5th grade music education to classrooms throughout Los Angeles County. "Music in the Schools" focuses on schools in under-resourced neighborhoods, and teaches rhythm, note reading, solfege, music culture and history weekly through our year-long program. Our curriculum integrates with and enhances students' understanding of math, reading, science, history, and creative writing.

The 68-member SJO has performed in concerts throughout Southern California including the Carpenter Performing Arts Center, Royce Hall (UCLA), Ford Amphitheatre, San Gabriel Mission Playhouse and the Walt Disney Theatre at CalArts. Special guests joining the orchestra have included Chris Brubeck, Bill Cunliffe, George Duke, Peter Erskine, Dave Grusin, Christian McBride, Raul Midon, Lee Ritenour, Luciana Souza, Ernie Watts and The Yellowjackets. In 2015, the SJO released its debut recording featuring commissioned works by George Duke and Lee Ritenour, along with a performance of "Rhapsody in Blue" with Bill Cunliffe.

The SJO is comprised of Southern California's finest studio, concert and jazz musicians. This all-star band consists of members and former members of the Los Angeles Philharmonic, Hollywood Bowl Orchestra, Atlanta Symphony and New York Philharmonic. They have performed and toured with such legendary bands and performers as Stan Kenton, Count Basie, Lady Gaga and Barbra Streisand and perform for Hollywood's top film and television composers.

"BEYOND SYMPHONIC JAZZ" ON KJAZZ 88.1 FM

Hosted by SJO Music Director Mitch Glickman, "Beyond Symphonic Jazz" radio series explores where the worlds of jazz and classical music meet, with interviews with some very special composers and performers including Pat Metheny, George Benson, Maria Schneider, Wayne Shorter, Stanley Clarke, Billy Cobham, Chris Botti, Linda Ronstadt, and Chick Corea. The show also features rare recordings along with new works that continue the great American tradition of symphonic jazz. The 2-hour show on KJazz 88.1 FM airs every Monday evening from 9 - 11 pm (PST) and can be heard online at jazzandblues.org. The broadcasts are also available On Demand for two weeks by going to the KJazz website and searching under the "Archived Programs" tab.



VIOLINS

Roberto Cani - Concertmaster
Marisa Kuney - Principal 2nd
Ron Clark
Johana Krejci
Chris Woods
Jennifer Takamatsu
Sorah Myung
Dynell Weber

CELLI

Maxim Velichkin - Principal
Garik Terzian

BASS

Karl Vincent

WOODWINDS

Sara Andon
Greg Huckins
Phil Feather
Sarah Beck
Marty Krystal
Rusty Higgins
John Mitchell

FRENCH HORN

Steve Becknell - Principal
Allen Fogle

TRUMPET

Dustin McKinney - Principal
Mike Cottone

TROMBONE

Alan Kaplan - Principal
Francisco Torres

TUBA

Jim Self

PERCUSSION

Bruce Carver

DRUMS

MB Gordy

PIANO

Jim Cox

CONTRACTOR

Tim Christiansen

LIBRARIAN

Mark Funiga

BOARD OF DIRECTORS

Steven Bland
Anne Finestone
Kerri Glickman
Mitch Glickman
Jan Glusac
Jinko Gotoh
Vinita Khilnani
Christopher Kronick
Jill Lawrence
Joseph Lewczak

MUSIC ADVISORY BOARD

Billy Childs
John Clayton
Rashid Duke
Peter Erskine
Russell Ferrante
Mitch Glickman
Christian McBride
Bob Mintzer
Lesla Terry
Ernie Watts

SPECIAL THANKS

National Endowment for the Arts
Tom Talbert Foundation
Herb Alpert Foundation
Ella Fitzgerald Charitable Foundation
Pasadena Showcase for the Arts
Guitar Center Foundation
Carpenter Performing Arts Center